



CAL GRANT A&B

Transfer Entitlement Program

This document displays data about the 2016-17 California Community College Transfer Entitlement Cal Grant A and B new paid recipients. Total Transfer Entitlement new paid recipients: 15,719. It also includes data on the offered awardees selected for institutions to verify that students met the program's eligibility requirements.

In 2016-17, Transfer Entitlement Cal Grant A awards paid tuition and mandatory systemwide fees of up to \$12,294. Transfer Entitlement Cal Grant B awards paid \$1,670 in living expenses plus tuition and systemwide fees of up to \$12,294.

Senate Bill 1644 (Chapter 403, Statutes of 2000) guarantees a Transfer Entitlement Cal Grant A or B award to every student who: graduated from a California high school or its equivalent after June 30, 2000, was a California resident at the time of high school graduation, transfers to a qualifying baccalaureate-degree granting institution from a California Community College during the award year, is under the age of 28 at the time of the transfer, has a Community College GPA of at least 2.4, and has financial need as defined in California Education Code 69432.9.

Applicants who attended a California Community College in the 2014-15 academic year, and were otherwise eligible, qualified for a 2016-17 Transfer Entitlement Cal Grant award. Also, Dream Act students who met AB 540 criteria were eligible to apply for Transfer Entitlement Cal Grant awards, as authorized by Chapter 604, Statutes of 2011.

The data in this report reflect the 2016-17 Transfer Entitlement Cal Grant A and B new paid recipients. Paid Recipients are those who applied for a Transfer Entitlement Cal Grant award, met statutory requirements and were offered awards, attended Cal Grant partici-

pating institutions, and received payment.

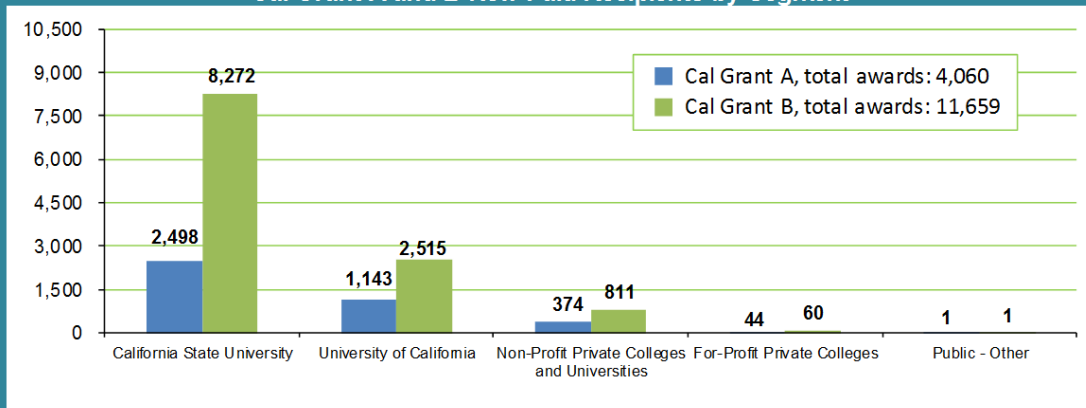
For 2016-17, 28,454 students were offered a preliminary Transfer Entitlement Cal Grant A and B awards, of which 17,816 provided confirmation of meeting the eligibility requirements. Over 88%, or 15,719 of 17,816, actually used their awards and became Paid Recipients, including 4,060 in the Transfer Entitlement Cal Grant A program and 11,659 in the Transfer Entitlement Cal Grant B program.

Some items of note include:

- More than 89% (3,641 of 4,060) of Paid Recipients in the Transfer Entitlement Cal Grant A program attended the University of California (UC) and the California State University (CSU) (Table 1, p. 1).
- Over 70% (8,272 of 11,659) of Paid Recipients in the Transfer Entitlement Cal Grant B program attended the California State University (CSU), and CSU had more than three times as many Transfer Entitlement Cal Grant B Paid Recipients as UC (Table 1, p. 1).
- 8,381, or 72%, of the 11,659 Entitlement Cal Grant B Paid Recipients had incomes of less than \$24,000 (Table 9, p. 3). The maximum family income for a Cal Grant B in 2016-17 is \$57,500.

This report also includes data on new and renewal offered awardees selected for verification by the institutions.

TABLE 1
Transfer Entitlement
Cal Grant A and B New Paid Recipients by Segment

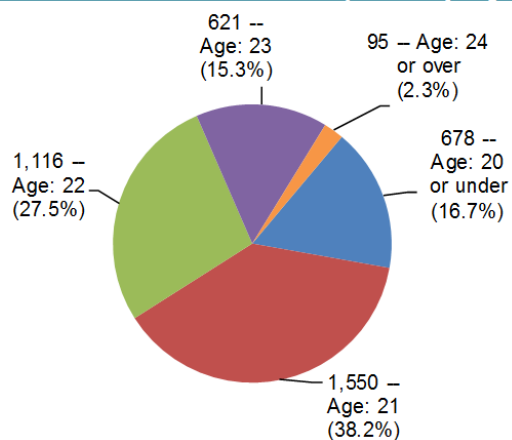


Entitlement Cal Grant

A

Cal Grant A awards provide for full systemwide fees at the California State University (\$5,742) and the University of California (\$12,294), as well as tuition support at independent four-year California colleges and universities and private for-profit institutions accredited by the Western Association of Schools and Colleges (\$9,084), and private career colleges (\$4,000). The following charts include data on Transfer Entitlement Cal Grant A new paid recipients by: school segment, GPA, income, and age.

TABLE 2
Cal Grant A New Paid Recipients by Age



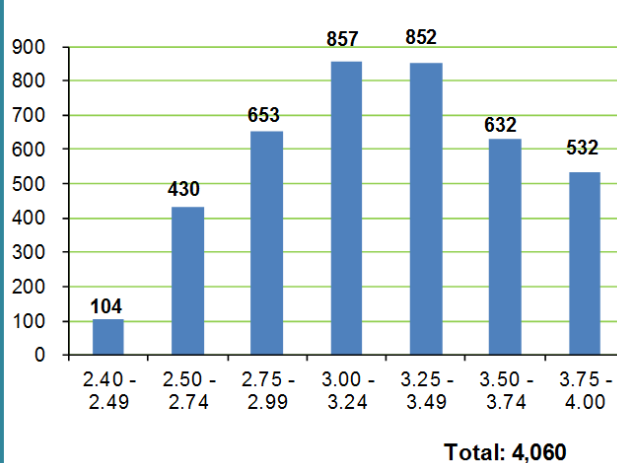
Total: 4,060

TABLE 3
Cal Grant A
Average Parental Assets by Segment*

School Segment	Assets
University of California	\$3,858
California State University	\$2,255
Non-Profit Private Colleges and Universities	\$3,126
For-Profit Private Colleges	\$2,636

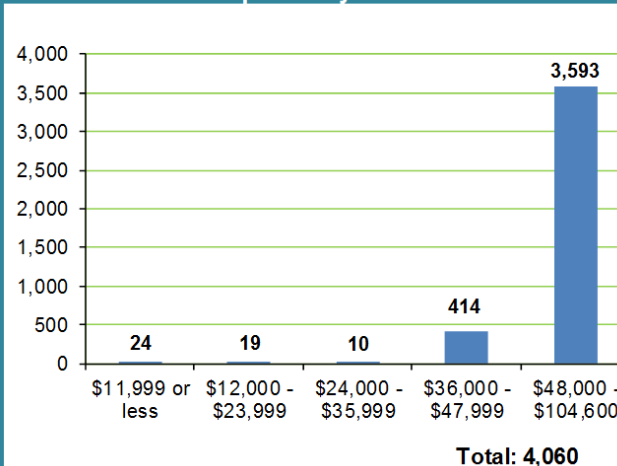
* Assets do not include the primary residence or retirement plans; 97 percent of new paid recipients are dependent.

TABLE 4
Transfer Entitlement Cal Grant A New Paid Recipients by GPA



Total: 4,060

TABLE 5
Transfer Entitlement Cal Grant A New Paid Recipients by Income



Total: 4,060

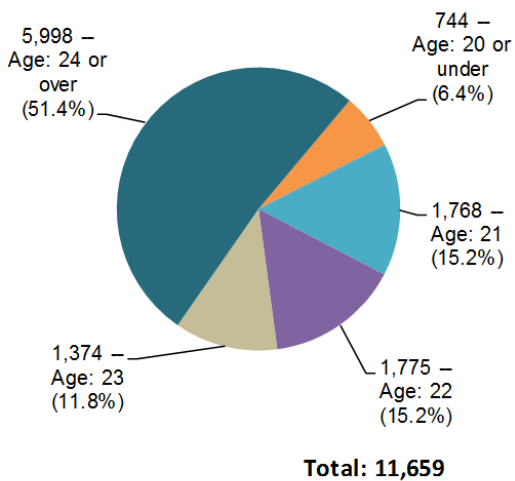
Some items of note on Cal Grant A include:

- Out of 4,060 Transfer Entitlement Cal Grant A recipients in 2016-17, 3,965 (97.7%) were under 24 years of age, compared to 48.6% of Cal Grant A recipients (Table 2, p. 2; Table 6, p. 3). As a result, 3% of Cal Grant A recipients were independent compared to 44% of Cal Grant B recipients (Table 3, p. 2; Table 7a, p. 3).
- Over 70% of Cal Grant A recipients had a community college GPA of at least 3.0, compare to over 60% of Cal Grant B recipients (Table 4, p. 2; Table 8, p. 3). This is despite the fact that the GPA requirement is the same for A and B for Transfer Entitlement applicants: 2.40.

Entitlement **B** Cal Grant

Cal Grant B awards provide up to \$1,670 for books and living expenses in addition to helping pay for tuition and fees at public and independent four-year colleges or other qualifying schools at the same level as the Cal Grant A award. The following charts include data on Transfer Entitlement Cal Grant A new paid recipients by: school segment, GPA, income, and age.

TABLE 6
Cal Grant B New Paid Recipients by Age



Some items of note on Cal Grant B include:

- Out of 11,659 Transfer Entitlement Cal Grant B recipients in 2016-17, 5,661 (48.6%) were under 24 years of age, compared to 97.7% of Cal Grant A recipients (Table 6, p. 3; Table 2, p. 2). As a result, 44% of Cal Grant B recipients were independent compared to 3% of Cal Grant A recipients (Table 7a, p. 3; Table 3, p. 2).
- Over 60% of Cal Grant B recipients had a community college GPA of at least 3.0, compared to over 70% of Cal Grant A recipients (Table 8, p. 3; Table 4, p. 2). This is despite the fact that the GPA requirement is the same for A and B for Transfer Entitlement applicants: 2.40.
- 8,381 of 11,549 (71.9%) Cal Grant B recipients had a family income below \$24,000.

TABLE 7a
Cal Grant B
Average Parental Assets by Segment*

School Segment	Assets
University of California	\$1,077
California State University	\$674
Non-Profit Private Colleges and Universities	\$1,561
For-Profit Private Colleges	\$3,445

* Assets do not include the primary residence or retirement plans; 44 percent of new paid recipients are dependent.

TABLE 7b
Cal Grant B
Average Student Assets by Segment

School Segment	Assets
University of California	\$362
California State University	\$231
Non-Profit Private Colleges and Universities	\$286
For-Profit Private Colleges	\$45

TABLE 8
Transfer Entitlement Cal Grant B New Paid Recipients by GPA

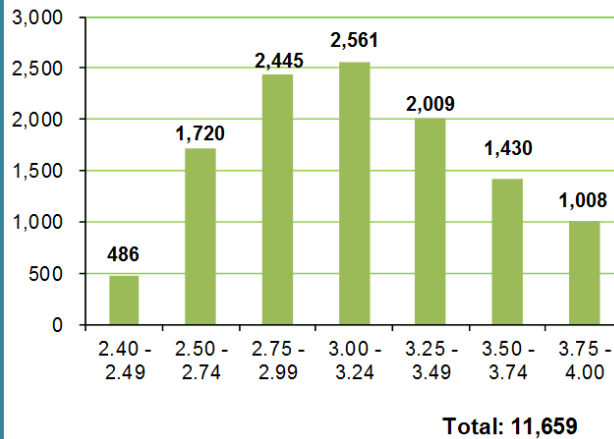
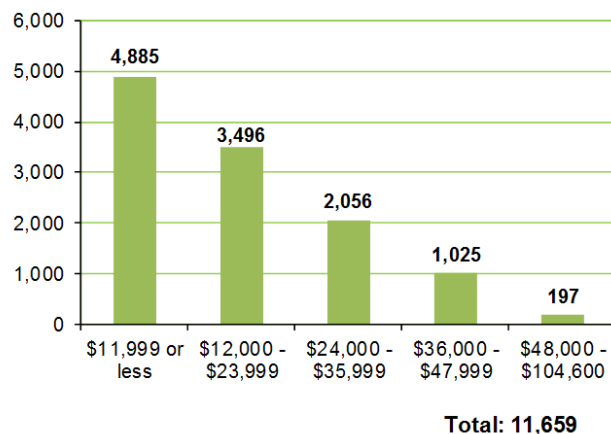


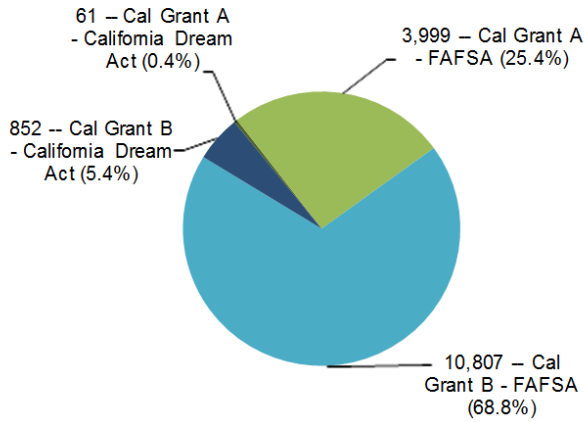
TABLE 9
Transfer Entitlement Cal Grant B New Paid Recipients by Income



About the New Paid Recipients

TABLE 10

Transfer Entitlement Cal Grant A and B New Paid Recipients by Application Filed



FAFSA, total awards: 14,806
CA Dream Act, total awards: 913

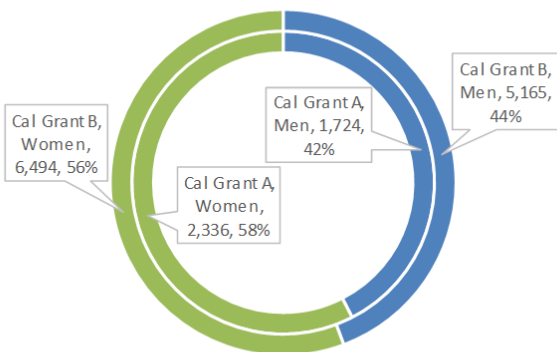
TABLE 11

Typical New Paid Recipient

	Age	Income	GPA	Family Size
Cal Grant A	21.5	\$65,000	3.24	4.1
Cal Grant B	23.4	\$16,782	3.13	2.5
All (Cal Grant A & B)	22.9	\$29,236	3.16	2.9

TABLE 12

Transfer Entitlement Cal Grant A and B New Paid Recipients by Program and Gender



Inner = Cal Grant A, total: 4,060: 42.5% Men, 57.5% Women
Outer = Cal Grant B, total: 11,659: 44.3% Men, 55.7% Women

Total: 15,719

About the Applicants

Applicants must meet multiple criteria to qualify. Submitting both the Free Application for Federal Student Aid (FAFSA) or the California Dream Act Application and the Cal Grant GPA Verification Form is the first step for students to be considered for a Transfer Entitlement Cal Grant award. For the 2016-17 award year, 28,454 met this first step and were sent a Preliminary Award letter along with a Transfer Entitlement Cal Grant Certification Form that they had to complete and return. The form included the following information:

- the month and year the student graduated from high school,
- the name of the high school and the city where it is located,
- the date the student became a resident of California,
- the name of the California Community College from which the student would be transferring during the 2016-17 award year, and
- the name of the school to which the student would be transferring during the 2016-17 award year.

Of the 28,454 applicants who received a Transfer Entitlement Cal Grant Certification Form, 23,599 returned the form. Of those 23,599 who returned the form, 17,816 met the qualifications for the Transfer Entitlement Cal Grant. 1,754 or 10.9 percent of the 17,816 were randomly selected for institutions to verify that they met the program's eligibility requirements.



California Student Aid Commission
P.O. Box 419026
Rancho Cordova, CA 95741-9026
www.csac.ca.gov

The California Student Aid Commission is the state principal agency responsible for administering financial aid programs for students attending public and private universities, colleges, and vocational schools in California. The financial aid programs include the Cal Grant program, the Chafee Grant Program and several targeted state scholarship and loan assumption programs. The Commission also administers financial aid awareness and outreach programs, such as CalSOAP and Cash for College, in collaboration with business, private industry and community-based organizations.

New and Renewal Transfer Entitlement Cal Grants Selected for Verification

Assembly Bill 840 (Chapter 43, Statutes of 2006) requires new Transfer Entitlement offered awardees to provide confirmation of meeting eligibility requirements. This bill also requires at least 10 percent of the new and renewal awards be randomly selected for campus-level verification that the offered awardees meet the program’s eligibility requirements before disbursing funds.

In the 2016-17 award year, 12,623 renewal offered awardees continue to be eligible for payment. Of the 12,623 offered awardees, 33 had already been verified by the institutions to meet the program’s eligibility. An additional 1,317, or 10.5 percent, were randomly selected for institutions to verify in the 2016-17 award year that they met the program’s eligibility requirements.

TABLE 11
Selected New Cal Grant A and B Offered Awardees by School Segment and Verification Status

<i>University of California</i>		
Verified and Eligible for Payment	360	85%
Verified and Ineligible	5	1%
Withdrawn	59	14%
Total Selected for Verification	424	100%
<i>California State University</i>		
Verified and Eligible for Payment	1,028	78%
Verified and Ineligible	52	4%
Withdrawn	230	18%
Total Selected for Verification	1,310	100%
<i>Non-Profit Private Colleges and Universities</i>		
Verified and Eligible for Payment	128	76%
Verified and Ineligible	3	2%
Withdrawn	37	22%
Total Selected for Verification	168	100%
<i>For-Profit Private Colleges</i>		
Verified and Eligible for Payment	31	89%
Verified and Ineligible	0	0%
Withdrawn	4	11%
Total Selected for Verification	35	100%

TABLE 13
Selected Renewal Cal Grant A and B Offered Awardees by School Segment and Verification Status

<i>University of California</i>		
Verified and Eligible for Payment	271	89%
Verified and Ineligible	0	0%
Pending Verification	34	11%
Total Selected for Verification	305	100%
<i>California State University</i>		
Verified and Eligible for Payment	726	85%
Verified and Ineligible	32	4%
Pending Verification	96	11%
Total Selected for Verification	854	100%
<i>Non-Profit Private Colleges and Universities</i>		
Verified and Eligible for Payment	124	87%
Verified and Ineligible	2	2%
Pending Verification	16	11%
Total Selected for Verification	142	100%
<i>For-Profit Private Colleges</i>		
Verified and Eligible for Payment	12	75%
Verified and Ineligible	1	6%
Pending Verification	3	19%
Total Selected for Verification	16	100%

TABLE 12
Selected New Cal Grant A and B Offered Awardees by Verification Status

<i>All Segments</i>		
Verified and Eligible for Payment	1,547	80%
Verified and Ineligible	60	3%
Withdrawn	330	17%
Total Selected for Verification	1,937	100%

TABLE 14
Selected Renewal Cal Grant A and B Offered Awardees by Verification Status

<i>All Segments</i>		
Verified and Eligible for Payment	1,133	86%
Verified and Ineligible	35	3%
Pending Verification	149	11%
Total Selected for Verification	1,317	100%