



CAL GRANT A&B

Transfer Entitlement Program

This document displays data about the 2018-19 California Community College Transfer Entitlement Cal Grant A and B new paid recipients. Total Transfer Entitlement new paid recipients: 14,519. It also includes data on the offered awardees selected for institutions to verify that students met the program's eligibility requirements.

In 2018-19, Transfer Entitlement Cal Grant A awards paid tuition and mandatory systemwide fees of up to \$12,570. Transfer Entitlement Cal Grant B awards paid \$1,672 in living expenses plus tuition and systemwide fees of up to \$12,570.

Senate Bill 1644 (Chapter 403, Statutes of 2000) guarantees a Transfer Entitlement Cal Grant A or B award to every student who: graduated from a California high school or its equivalent after June 30, 2000, was a California resident at the time of high school graduation, transfers to a qualifying baccalaureate-degree granting institution from a California Community College during the award year, is under the age of 28 at the time of the transfer, has a Community College GPA of at least 2.4, and has financial need as defined in California Education Code 69432.9.

Applicants who attended a California Community College in the 2016-17 academic year, and were otherwise eligible, qualified for a 2018-19 Transfer Entitlement Cal Grant award. Also, Dream Act students who met AB 540 criteria were eligible to apply for Transfer Entitlement Cal Grant awards, as authorized by Chapter 604, Statutes of 2011.

The data in this report reflect the 2018-19 Transfer Entitlement Cal Grant A and B new paid recipients. Paid Recipients are those who applied for a Transfer Entitlement Cal Grant award, met statutory requirements and were offered awards, attended Cal Grant partici-

pating institutions, and received payment.

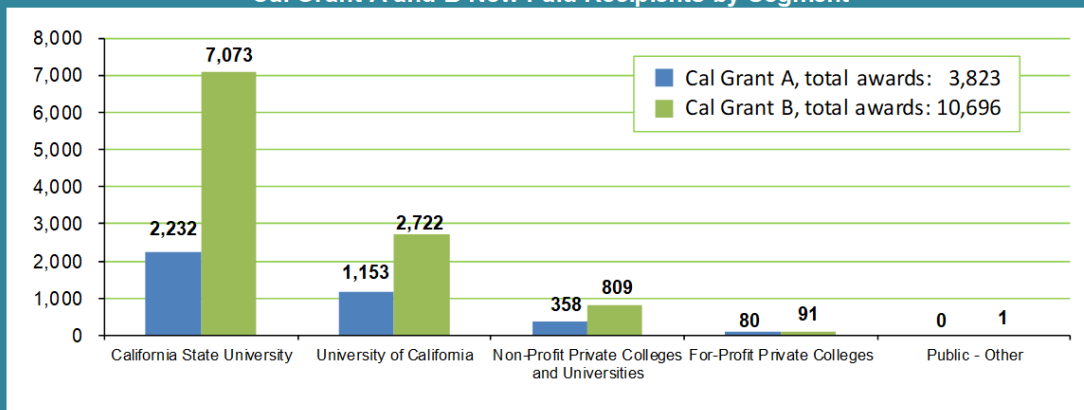
For 2018-19, 30,656 students were offered a preliminary Transfer Entitlement Cal Grant A and B awards, of which 17,026 provided confirmation of meeting the eligibility requirements. Over 85%, or 14,519 of 17,026, actually used their awards and became Paid Recipients, including 3,823 in the Transfer Entitlement Cal Grant A program and 10,696 in the Transfer Entitlement Cal Grant B program.

Some items of note include:

- Over 88% (3,385 of 3,823) of Paid Recipients in the Transfer Entitlement Cal Grant A program attended the University of California (UC) and the California State University (CSU) (Table 1, p. 1).
- Over 66% (7,073 of 10,696) of Paid Recipients in the Transfer Entitlement Cal Grant B program attended the California State University (CSU), and CSU had more than twice as many Transfer Entitlement Cal Grant B Paid Recipients as UC (Table 1, p. 1).
- 7,062 or 66%, of the 10,696 Entitlement Cal Grant B Paid Recipients had incomes of less than \$24,000 (Table 9, p. 3). The maximum family income for a Cal Grant B in 2018-19 is \$62,800.

This report also includes data on new and renewal offered awardees selected for verification by the institutions.

TABLE 1
Transfer Entitlement
Cal Grant A and B New Paid Recipients by Segment

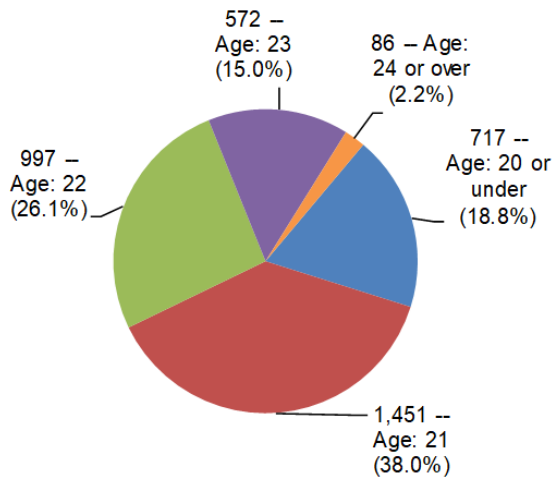


Entitlement Cal Grant

A

Cal Grant A awards provide for full systemwide fees at the California State University (\$5,742) and the University of California (\$12,570), as well as tuition support at independent four-year California colleges and universities (\$9,084), private for-profit institutions accredited by the Western Association of Schools and Colleges (\$8,056), and private career colleges (\$4,000). The following charts include data on Transfer Entitlement Cal Grant A new paid recipients by: school segment, GPA, income, and age.

TABLE 2
Cal Grant A New Paid Recipients by Age



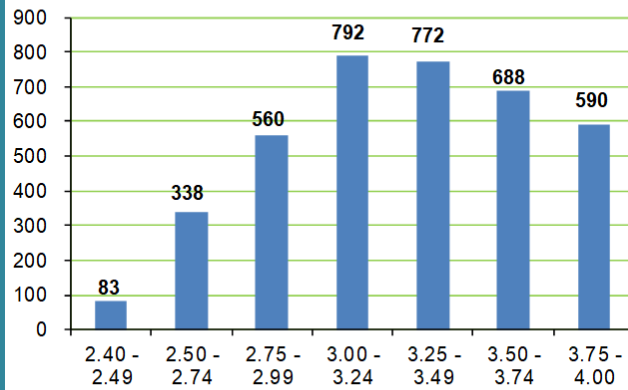
Total: 3,823

TABLE 3
Cal Grant A
Average Parental Assets by Segment*

School Segment	Assets
University of California	\$3,023
California State University	\$2,101
Non-Profit Private Colleges and Universities	\$3,713
For-Profit Private Colleges	\$3,649

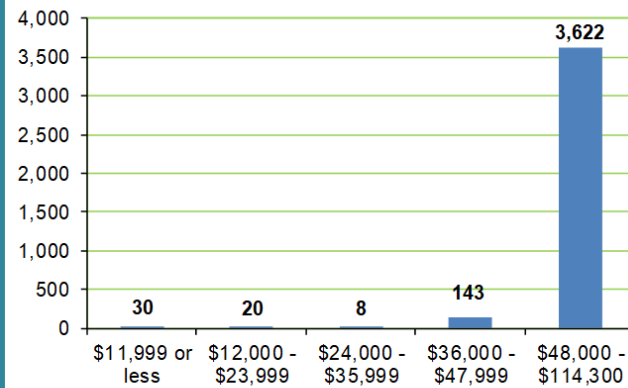
* Assets do not include the primary residence or retirement plans; 97 percent of new paid recipients are dependent.

TABLE 4
Transfer Entitlement Cal Grant A New Paid Recipients by GPA



Total: 3,823

TABLE 5
Transfer Entitlement Cal Grant A New Paid Recipients by Income



Total: 3,823

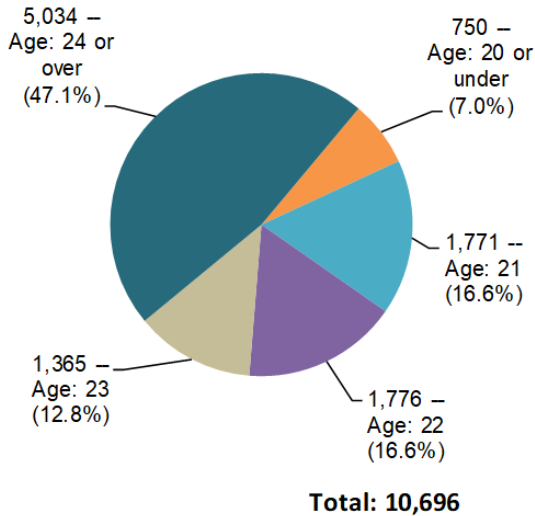
Some items of note on Cal Grant A include:

- Out of 3,823 Transfer Entitlement Cal Grant A recipients in 2018-19, 3,737 (97.8%) were under 24 years of age, compared to 52.9% of Cal Grant B recipients (Table 2, p. 2; Table 6, p. 3). As a result, 3% of Cal Grant A recipients were independent compared to 51% of Cal Grant B recipients (Table 3, p. 2; Table 7a, p. 3).
- Over 74% of Cal Grant A recipients had a community college GPA of at least 3.0, compare to over 66% of Cal Grant B recipients (Table 4, p. 2; Table 8, p. 3). This is despite the fact that the GPA requirement is the same for A and B for Transfer Entitlement applicants: 2.40.

Entitlement Cal Grant **B**

Cal Grant B awards provide up to \$1,672 for books and living expenses in addition to helping pay for tuition and fees at public and independent four-year colleges or other qualifying schools at the same level as the Cal Grant A award. The following charts include data on Transfer Entitlement Cal Grant A new paid recipients by: school segment, GPA, income, and age.

TABLE 6
Cal Grant B New Paid Recipients by Age



Some items of note on Cal Grant B include:

- Out of 10,696 Transfer Entitlement Cal Grant B recipients in 2018-19, 5,662 (52.9%) were under 24 years of age, compared to 97.8% of Cal Grant A recipients (Table 6, p. 3; Table 2, p. 2). As a result, 51% of Cal Grant B recipients were independent compared to 3% of Cal Grant A recipients (Table 7a, p. 3; Table 3, p. 2).
- Over 66% of Cal Grant B recipients had a community college GPA of at least 3.0, compared to over 74% of Cal Grant A recipients (Table 8, p. 3; Table 4, p. 2). This is despite the fact that the GPA requirement is the same for A and B for Transfer Entitlement applicants: 2.40.
- 7,062 of 10,696 (66%) Cal Grant B recipients had a family income below \$24,000.

TABLE 7a
Cal Grant B
Average Parental Assets by Segment*

School Segment	Assets
University of California	\$1,075
California State University	\$626
Non-Profit Private Colleges and Universities	\$962
For-Profit Private Colleges	\$1,595

* Assets do not include the primary residence or retirement plans; 49 percent of new paid recipients are dependent.

TABLE 7b
Cal Grant B
Average Student Assets by Segment

School Segment	Assets
University of California	\$336
California State University	\$232
Non-Profit Private Colleges and Universities	\$275
For-Profit Private Colleges	\$507

TABLE 8
Transfer Entitlement Cal Grant B New Paid Recipients by GPA

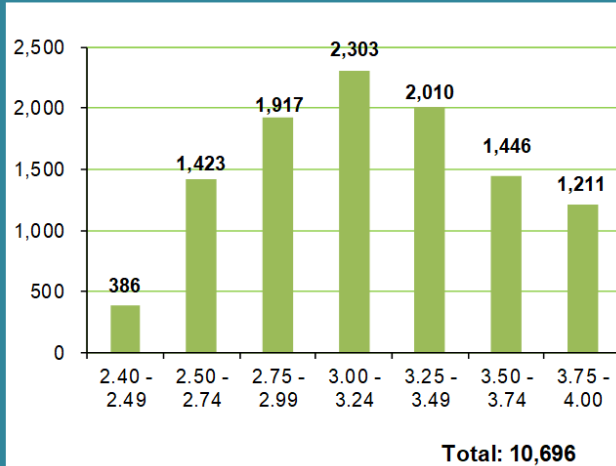
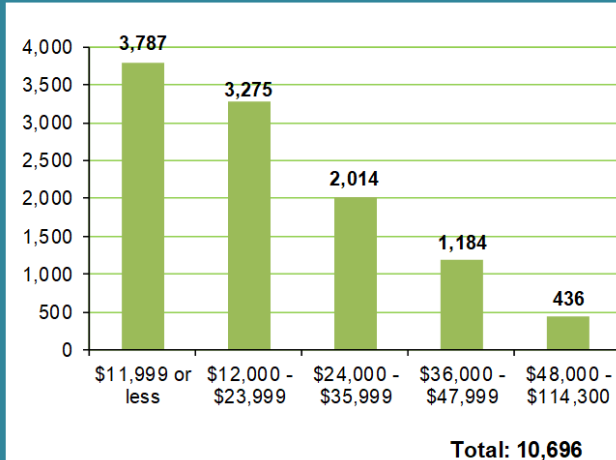


TABLE 9
Transfer Entitlement Cal Grant B New Paid Recipients by Income



About the Applicants

Applicants must meet multiple criteria to qualify. Submitting both the Free Application for Federal Student Aid (FAFSA) or the California Dream Act Application and the Cal Grant GPA Verification Form is the first step for students to be considered for a Transfer Entitlement Cal Grant award. For the 2018-19 award year, 30,656 met this first step and were sent a Preliminary Award letter along with a Transfer Entitlement Cal Grant Certification Form that they had to complete and return. The form included the following information:

- the month and year the student graduated from high school,
- the name of the high school and the city where it is located,
- the date the student became a resident of California,
- the name of the California Community College from which the student would be transferring during the 2018-19 award year, and
- the name of the school to which the student would be transferring during the 2018-19 award year.

Of the 30,656 applicants who received a Transfer Entitlement Cal Grant Certification Form, 21,715 returned the form. Of those 21,715 who returned the form, 17,026 met the qualifications for the Transfer Entitlement Cal Grant. 1,820 or 10.7 percent of the 17,026 were randomly selected for institutions to verify that they met the program's eligibility requirements.

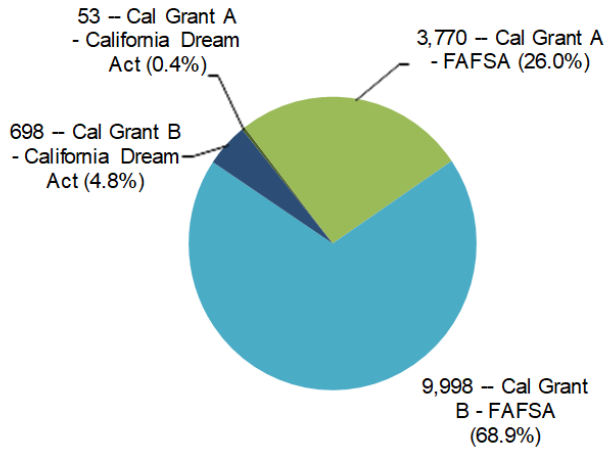


California Student Aid Commission
P.O. Box 419026
Rancho Cordova, CA 95741-9026
www.csac.ca.gov

The California Student Aid Commission is the state principal agency responsible for administering financial aid programs for students attending public and private universities, colleges, and vocational schools in California. The financial aid programs include the Cal Grant program, the Chafee Grant Program and several targeted state scholarship and loan assumption programs. The Commission also administers financial aid awareness and outreach programs, such as CalSOAP and Cash for College, in collaboration with business, private industry and community-based organizations.

About the New Paid Recipients

TABLE 10
Transfer Entitlement Cal Grant A and B
New Paid Recipients by Application Filed

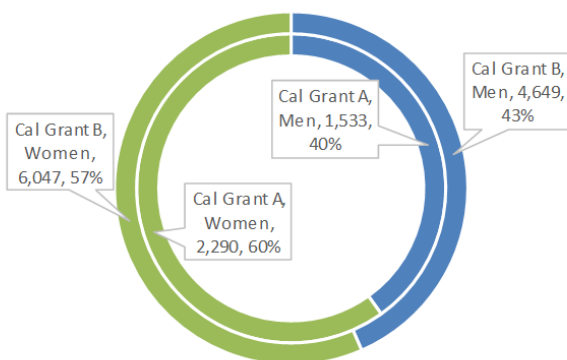


FAFSA, total awards: 13,768
CA Dream Act, total awards: 751

TABLE 11
Typical New Paid Recipient

	Age	Income	GPA	Family Size
Cal Grant A	21	\$71,089	3.28	4.1
Cal Grant B	23	\$19,251	3.18	2.6
All (Cal Grant A & B)	23	\$32,901	3.21	3.0

TABLE 12
Transfer Entitlement Cal Grant A and B
New Paid Recipients by Program and Gender



Inner = Cal Grant A, total: 3,067: 42% Men, 58% Women
Outer = Cal Grant B, total: 9,492: 45% Men, 55% Women

Total: 14,519

New and Renewal Transfer Entitlement Cal Grants Selected for Verification

Assembly Bill 840 (Chapter 43, Statutes of 2006) requires new Transfer Entitlement offered award-ees to provide confirmation of meeting eligibility requirements. This bill also requires at least 10 per- cent of the new and renewal awards be randomly selected for campus-level verification that the offered awardees meet the program’s eligibility requirements before disbursing funds.

In the 2018-19 award year, 12,088 renewal offered awardees continue to be eligible for pay- ment. Of the 2,379 renewal offered awardees who were not previously verified, 281 or 10.6 percent, were randomly selected for institutions to verify in the 2018-19 award year that they met the pro- gram’s eligibility requirements.

TABLE 11
Selected New Cal Grant A and B Offered Awardees
by School Segment and Verification Status

<i>University of California</i>		
Verified and Eligible for Payment	417	93%
Verified and Ineligible	1	1%
Withdrawn	29	6%
Total Selected for Verification	447	100%
<i>California State University</i>		
Verified and Eligible for Payment	878	80%
Verified and Ineligible	54	5%
Withdrawn	166	15%
Total Selected for Verification	1,098	100%
<i>Non-Profit Private Colleges and Universities</i>		
Verified and Eligible for Payment	152	85%
Verified and Ineligible	1	1%
Withdrawn	26	14%
Total Selected for Verification	179	100%
<i>For-Profit Private Colleges</i>		
Verified and Eligible for Payment	53	85%
Verified and Ineligible	1	2%
Withdrawn	8	13%
Total Selected for Verification	62	100%

TABLE 13
Selected Renewal Cal Grant A and B Offered Awardees
by School Segment and Verification Status

<i>University of California</i>		
Verified and Eligible for Payment	38	85%
Verified and Ineligible	1	2%
Pending Verification	6	13%
Total Selected for Verification	45	100%
<i>California State University</i>		
Verified and Eligible for Payment	133	72%
Verified and Ineligible	13	7%
Pending Verification	39	21%
Total Selected for Verification	185	100%
<i>Non-Profit Private Colleges and Universities</i>		
Verified and Eligible for Payment	37	84%
Verified and Ineligible	1	2%
Pending Verification	6	14%
Total Selected for Verification	44	100%
<i>For-Profit Private Colleges</i>		
Verified and Eligible for Payment	5	83%
Verified and Ineligible	1	17%
Pending Verification	0	0%
Total Selected for Verification	6	100%

TABLE 12
Selected New Cal Grant A and B Offered Awardees
by Verification Status

<i>All Segments</i>		
Verified and Eligible for Payment	1,503	83%
Verified and Ineligible	58	3%
Withdrawn	254	14%
Total Selected for Verification	1,815	100%

TABLE 14
Selected Renewal Cal Grant A and B Offered Awardees
by Verification Status

<i>All Segments</i>		
Verified and Eligible for Payment	213	76%
Verified and Ineligible	16	6%
Pending Verification	51	18%
Total Selected for Verification	280	100%